

HÉRCULES® POST



CHARACTERISTICS

HEIGHT

From 650 to 3.200 mm.

RESISTANCE I/V

4,72 cm³

DIMENSIONS

60x40x1,5 mm.



Post to dig in

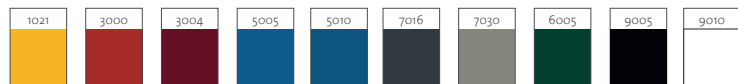


Post with base
125 X 125 mm

FINISHING FEATURES

POWDER COATED

10 standard RAL colours:



- ♦ More than 200 RAL colours available

OXIDON

Metalized texture:



HOT DIP GALVANIZED

Better durability:



10 YEARS WARRANTY

- ♦ Steel galvanized plate according to EN 10142 standard.
Zinc thickness: 140 gr/m² minimum.
- ♦ Polyester powder coating by microcrystalline phosphatation:
80 microns minimum.



STANDARD DIMENSIONS

Panel height (mm)	N° brackets per post	Post to dig in (mm)		Post with base (mm)
		Short	Long	
625	2	850	1050	650
825		1050	1250	850
1025		1250	1550	1050
1225	3	1550	1750	1250
1525		1850	2050	1550
1725		2050	2350	1750
1925		2350	2550	1950
2025	4	2350	2550	2050
2425	4	3200	3200	-

Other dimensions available on request.

ACCESSORIES

FASTENING ACCESSORIES

HÉRCULES® BRACKET



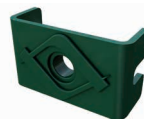
- Material: polyamide
- Screws included
- 90° corners
- RAL colours: green 6005, grey 7045, white 9003 and black 9005

ULTRAFIX® BRACKET



- Material: galvanised and coated steel
- Screws included
- 90° corners
- RAL standard colours

HÉRCULES® STAPLE



- Material: galvanised and coated steel
- Screw not included
- 90° corners
- RAL standard colours

HÉRCULES® POST UNION



- Material: zinc plated steel 10 micron -1,50mm thickness-
- To lift fences made with Hércules posts -1,50 mm thickness-

DEFENSIVE ARMS

ARM POST TO FIT IN



- Material: Galvanised and coated steel
- Length: 650 mm
- Screws included
- To fit in panels and/or 3 barbed wires

DOUBLE WELDED POST



- Material: Galvanised and coated steel
- Length: 650 mm
- To fit in panels and/or 3 barbed wires

BASES (fences up to 1,5 m high)

ALUMINIUM HÉRCULES® BASE



- Material: Aluminium
- Size: 125x125 mm
- Screws included

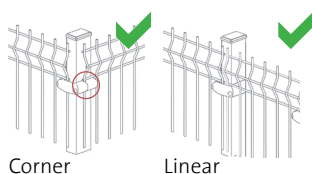
STEEL HÉRCULES® BASE



- Material: zinc plated coated or postgalvanised steel
- Size: 125x125 mm

INSTALLATION

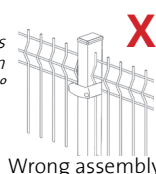
HOW TO ASSEMBLE THE BRACKETS:



Corner

Linear

The fastening slots are used only when the panels form 90° corners.



Wrong assembly

DISTANCE BETWEEN POSTS AXIS

- HÉRCULES and BRICOHÉRCULES panels of 2500mm length: 2.525 mm (+10/-20mm)
- DOUBLE WIRE panel 6/5/6 of 2490mm length: 2.515 mm (+10/-20mm)

The Hércules post allows sequential installation (all posts and then all panels).

+150 YEARS OF EXPERIENCE
WILL ALWAYS MAKE THE DIFFERENCE